

## The procedures for updating the firmware on inverter

\* This file is for the unit with RS232 communication interface.

**Step 1:** Connect the inverter and the computer with a RS232 to RJ45 cable



Figure 1

**Step 2:** Connect the DC power or battery (must be more than start up voltage, i.e. >11.5V for 1kVA model and >23.0V for 2KVA & 3KVA model) to the battery connector, then turn on the inverter.

**Step 3:** Check COM port number you are using in Computer management >> Device manage >> Ports(COM & Port).

**Note:** Make sure all application communication software using this COM port is closed. The application software include some UPS monitoring software

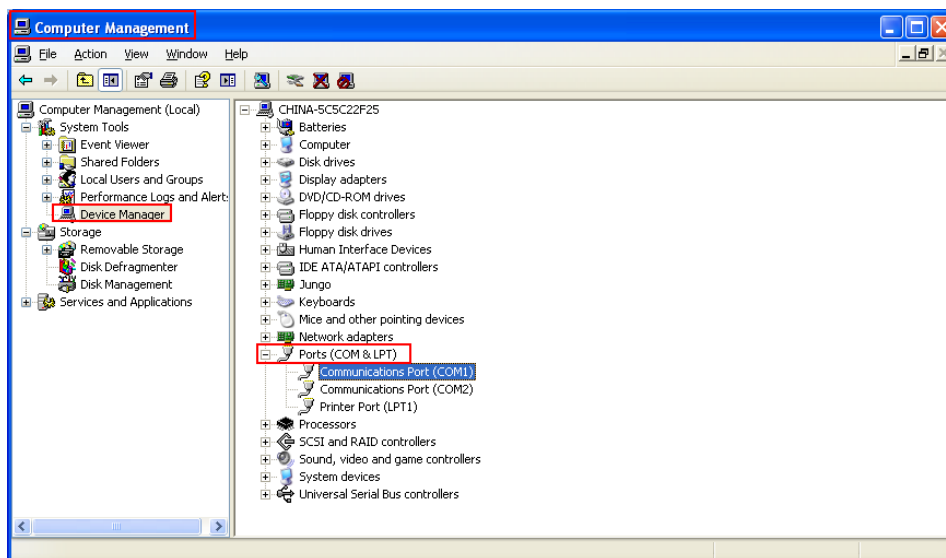


Figure 2

**Step 4:** Execute 'InvReflashTool.exe'

**Step 5:** Click interface check box to select the right COM port (check in Step 3)

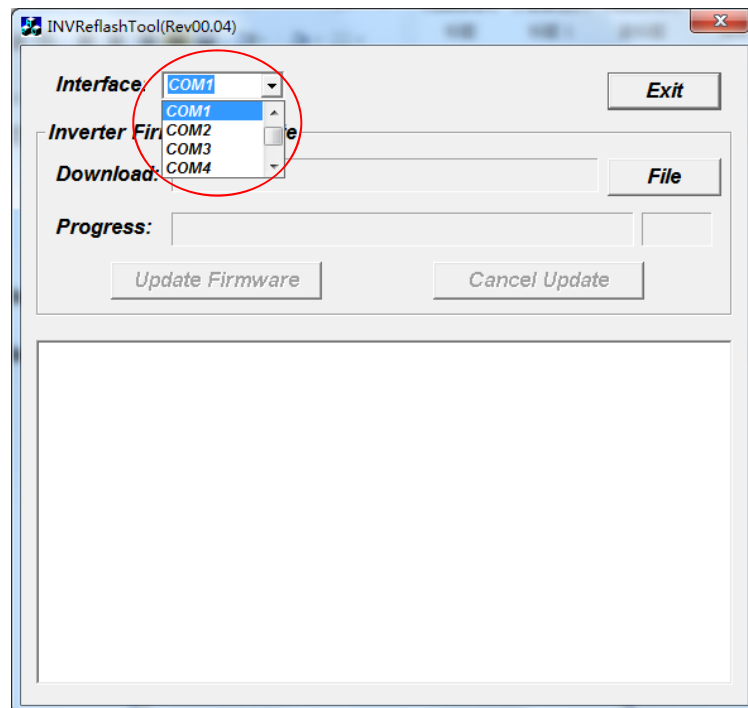


Figure 3

**Step 6:** Click **File** button.

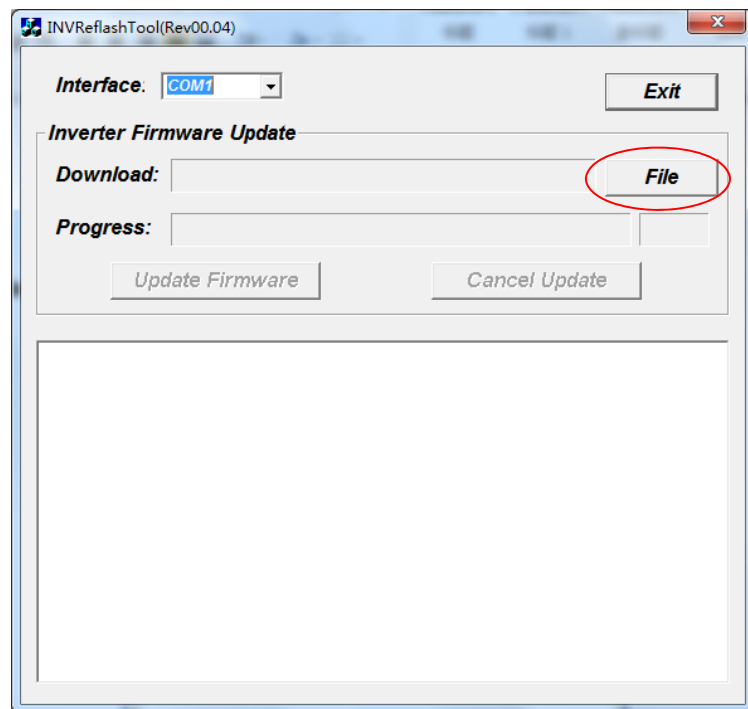


Figure 4

Select the firmware file, by double clicking it ('Verxx.xx' is the version of the firmware, 'x' is the number from 0~9, example: Ver08.33).

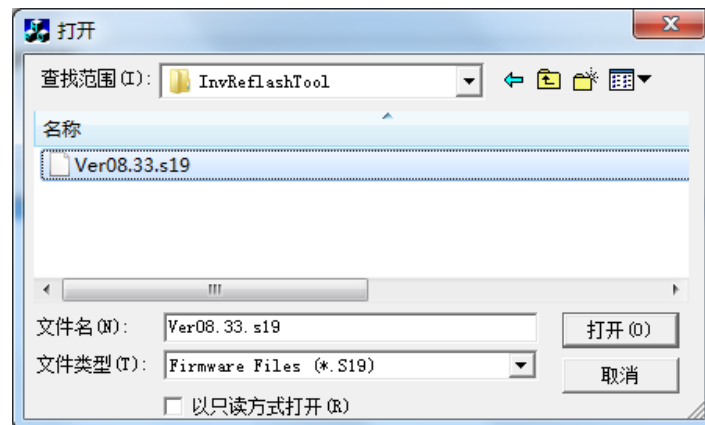


Figure 5

**Step 7: Click Update Firmware button to start firmware update.**

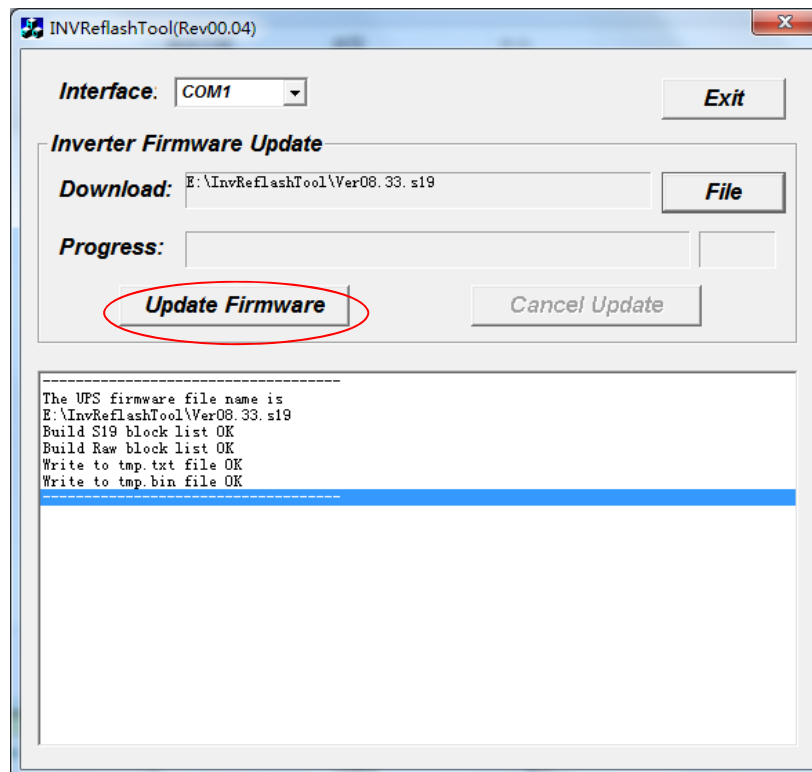


Figure 6

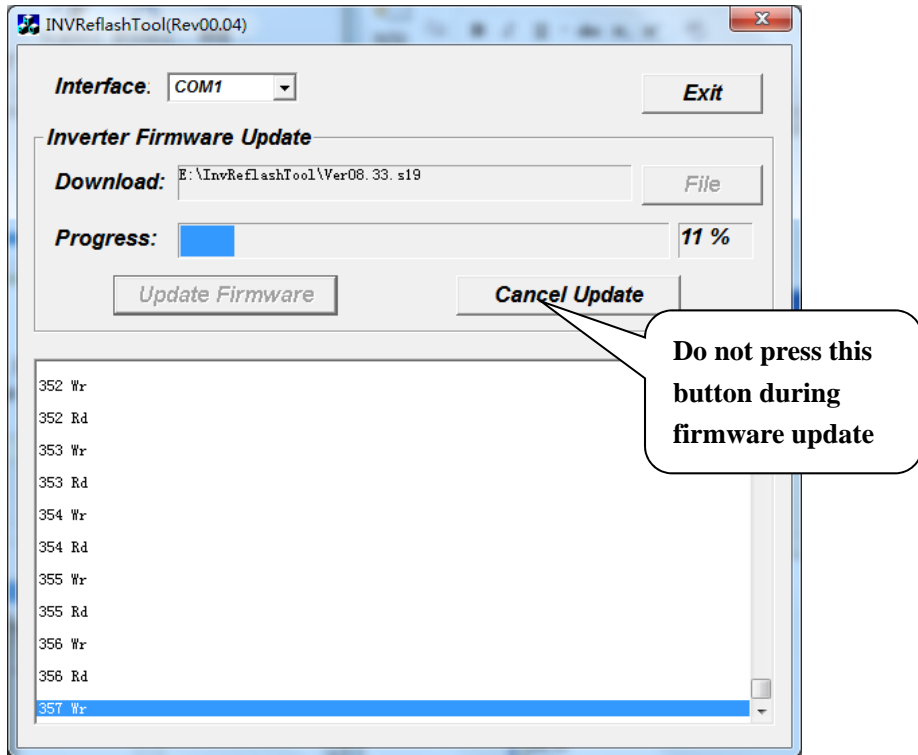


Figure 7

**Step 8:** When the processing bar is up to 100%, below dialog will pop-up to remind you the programming is successful! Now the software of the main board is updated completely!

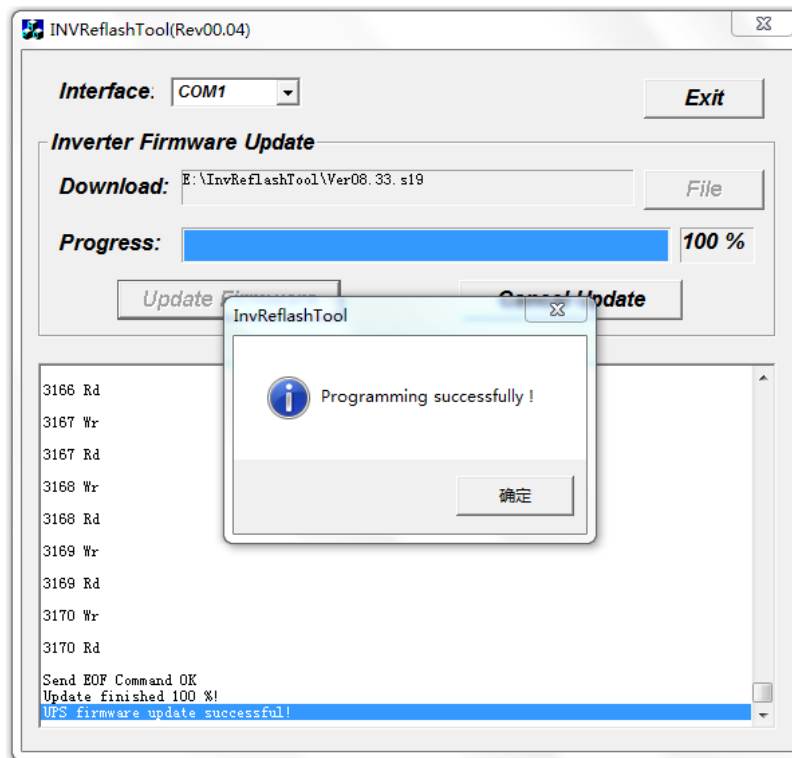


Figure 9

### Notes:

1. If you want to update another unit, don't close "InvReflashTool.exe" software, and restart from Step 6.
2. If below error appears in Step 7, please check the connection cable between computer and inverter, and check communication port refer to Step 3. Then close "InvReflashTool.exe", and restart from Step 4.

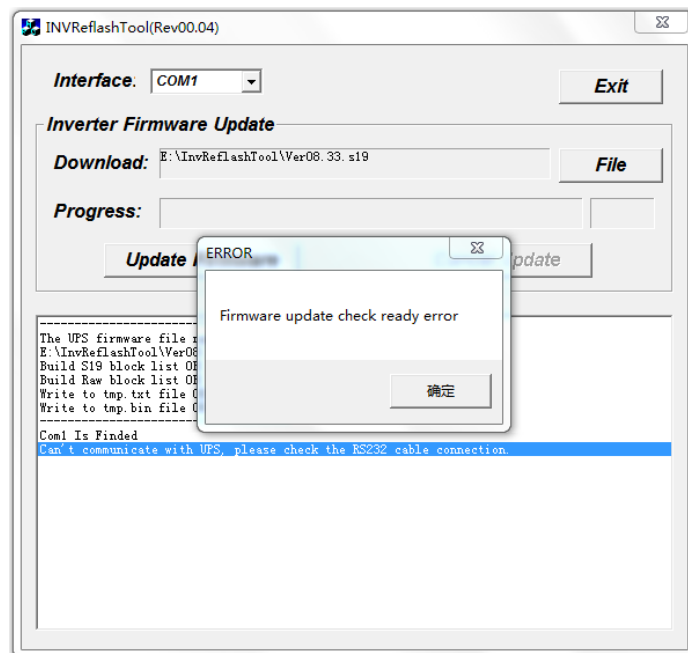


Figure 10

3. If below error appears before Step 8, "read data Err" means programming fail. This may be because of communication lost in programming. Please close "InvReflashTool.exe", remove the DC power or battery to the battery connector, and then restart from Step 2.

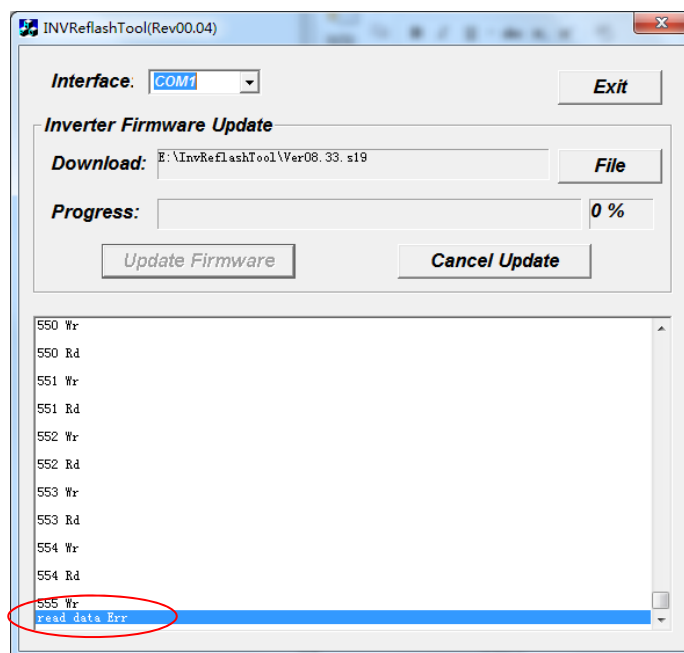


Figure 11